



# Alpha Awning Series

*Stylish, Robust & Energy Efficient*

 **TURNILS®**

*Engineered & independently  
tested to withstand the harsh  
Australian climate.*



# What are Alpha Awnings?

**Designed in Australia,  
the Alpha Awning  
Series is a modern  
awning system  
suited to all exterior  
buildings.**

All 4 awning styles within the series use common hardware for a consistent appearance irrespective of which awning style you choose. Personalise the perfect awning to suit your external shading requirements in 5 easy steps.





**Did you know?** Alpha Awnings have cleverly designed tube reducers allowing fabric to roll smoothly reducing tracking and improving roll performance.

Fixing components are available in durable zinc or 304 grade stainless steel ideal for coastal environments.

## STEP 1

### Awning Style

Mix & match the awning styles whilst still maintaining a consistent appearance for your home.



#### Straight Drop

Sleek & simple with a modern aesthetic.



#### Pivot Arm

Perfect for outward opening windows to circulate air flow & reduce direct sunlight into the home.



#### Cable Guide

Industrial look allowing privacy & ventilation.



#### Side Retention System

Ideal for windy areas. Encloses an outside area, with no gaps for dust & dirt to enter.

## STEP 2 Headbox Options



### Closed Headbox

Keeps the fabric clean from rain, UV & dirt enhancing longevity.



### Open Headbox

Increased air circulation around the roller minimising heat build up for PVC skins.



### Open Roller

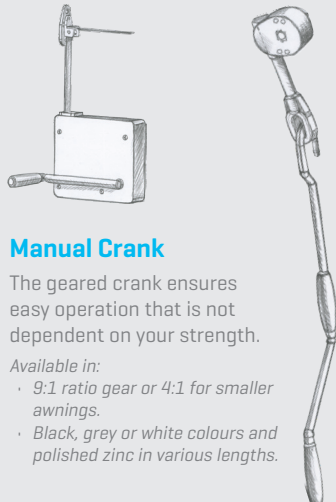
A cost effective option offering a modern industrial look.

## STEP 3 Operating Options

### Internal Cord Winch

Perfect solution to operate your awning when the weather is not ideal outside.

*Only available on 60mm tube.*



### Manual Crank

The geared crank ensures easy operation that is not dependent on your strength.

Available in:

- 9:1 ratio gear or 4:1 for smaller awnings.
- Black, grey or white colours and polished zinc in various lengths.

### Standard Spring Operation

Allows you to manually adjust the height of the awning & secure using either the sliding bolt system or hold down clip option.

### Light Lift

An innovative operating option allowing you to raise & lower the awning to any desired position by simply moving the bottom rail by hand.

*See page 14 for more information.*

### Motorisation

Incorporating the best of technology & design, control your awning with a touch of a button. A range of premium & cost effective motorisation solutions are available.

*See pages 19-22 for more information.*



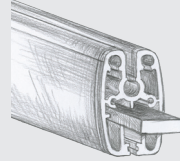
## STEP 4 Bottom Rail Accessories

The Alpha Awning Series Bottom Rail holds the fabric taut & minimises any movement in windy situations.

### Weight Bar

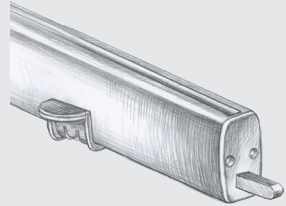
An additional weight bar can be inserted into the bottom rail for smaller awnings that require additional weight to reduce bottom rail bounce & increase fabric tension.

*An additional 1.2kgs can be added per metre.*



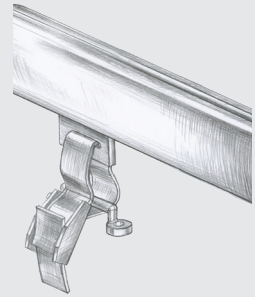
### Locking Bolt

Secures the awning into the side channel base, cable bracket or breaching staple. As the bolt is inserted inside the base rail, the system maintains its clean aesthetic, and allows the bottom rail to be positioned closer to the ground.



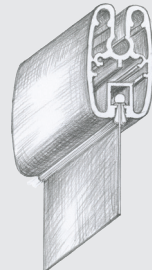
### Hold Down Strap

Hold down straps can be used to hold the awning down at various points across the width of the awning. Similar to the locking bolts, the hold down clips insert inside the bottom rail for a clean finish.



### Pile Brush & Valance

The floor surface is often not perfectly level. When an awning is installed over a wide width there will be room for light gaps, insects, debris, wind & rain to enter. A pile brush or a fabric valance can be inserted eliminating this gap.



The unique bottom rail is designed for functionality and quick installation.



## STEP 5 External Fabric

**When selecting your fabric, keep the following in mind.**

### **Fibreglass Sunscreen**

Featuring an inherently strong fibreglass core made with natural silica for superior fire retardance and reliable UV control.

Fibreglass external sunscreens offer exceptional performance with a high resistance to stretching, creasing or shrinking making them perfect for side retention system applications.

### **Polyester Sunscreen**

Made with a PVC polyester weave, these sunscreens provide solid UV control and are commonly available in a variety of openness factors.

### **Canvas**

This high performance, high quality canvas, made locally in Australia is perfect for a complete blockout solution from the sun and for privacy purposes. The canvas comes in a variety of in trend colours to suit all modern colour schemes.

### **Air flow**

If you are enclosing a verandah or patio, consider if you still want to have a nice cool breeze coming through, if so an open weave sunscreen is best.

### **Privacy & view through**

Consider if you want day or night time privacy. An open weave fabric in a dark colour gives fantastic view through in the day, but also allows others to see in at night.

### **Colour fastness**

Ensure the fabric you choose has excellent fade resistance to the sun. Any fabric with a fade resistance result of 6 & above will ensure your fabric remains the colour you selected for many years to come.



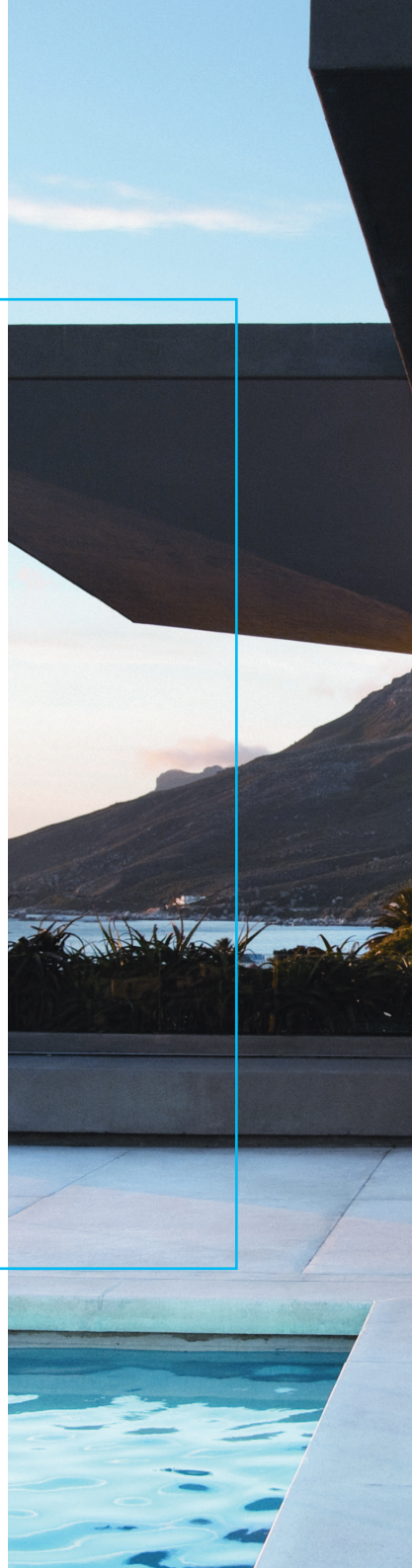




## Alpha Awning Straight Drop

**A traditional awning style that uses no guides making it ideal for sun/UV protection, air flow & where channels are not suitable.**

This is the entry level product for the Alpha Awning Series.





### **Bottom Rail End Caps**

Provide a neat, clean finish for the drop awning.

## Alpha Awning Cable Guide

**A great contemporary straight drop option for sun/UV protection, air flow & where channels are not suitable.**

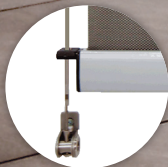
The cables are high tensile 2.5mm 316 grade marine stainless steel, making them perfect for coastal applications.





### Bottom Rail End Caps

By floating in and out of the bottom rail the awning operates smoothly without putting pressure on the cable.



## Alpha Awning Pivot Arm

**This awning projects the fabric off the window, with the arms & fabric forming an arc that allows air to flow behind the awning.**

This system is a heavy duty contemporary design ideal for larger windows that can be opened whilst the awning is projected.





## Heavy Duty Pivot Arm

Provides excellent fabric tension, even with awning widths up to 5 metres.

The arms are a modern anodised finish complementing our standard Silver Pearl hardware.

## Front Rail

Designed to have the same curve as the Straight Drop bottom rail allowing flexibility to mix & match the awnings throughout your home maintaining a design consistency.

## Sliding Arm

An optional sliding arm set facilitates changing the pivot point of the Awning by simply moving the arms up or down the sliding rails. This allows the awning to operate like a normal Pivot Arm in the down position, and in the raised position it allows head clearance over doorways providing a canopy effect.


## Alpha Awning Side Retention System (SRS)

**A straight drop  
option ideal for  
sun/UV protection,  
insect resistance,  
windy applications,  
enclosing a balcony  
and creating privacy.**

The fabric is tensioned by utilising a screen guide, located within the special two piece side channel, eliminating the possibility of fabric “blow outs” or light gaps.







The sleek side channels and floating guide ensures the awning remains in the desired position in windy environments.

### Light Lift Operating Option with SRS

Allows you to raise & lower the awning to any desired position by simply moving the bottom rail by hand.

The internal smooth spring mechanism provides lightweight & effortless operation without resistance.

**Width Max: 5.0m - Width Min 1.1m**

**Drop Max: 3m (at max width 4.25m) - Max 12.75sqm\***

*\*Maximum square metres will vary depending on the measured width and drop.*

# Alpha Awnings proven to reduce cooling energy costs by up to 60%\*

Alpha Awnings have been independently tested & proven to significantly reduce cooling energy costs by keeping a standard\* home at a consistent & comfortable temperature throughout the summer months.

## Independently Wind Tested

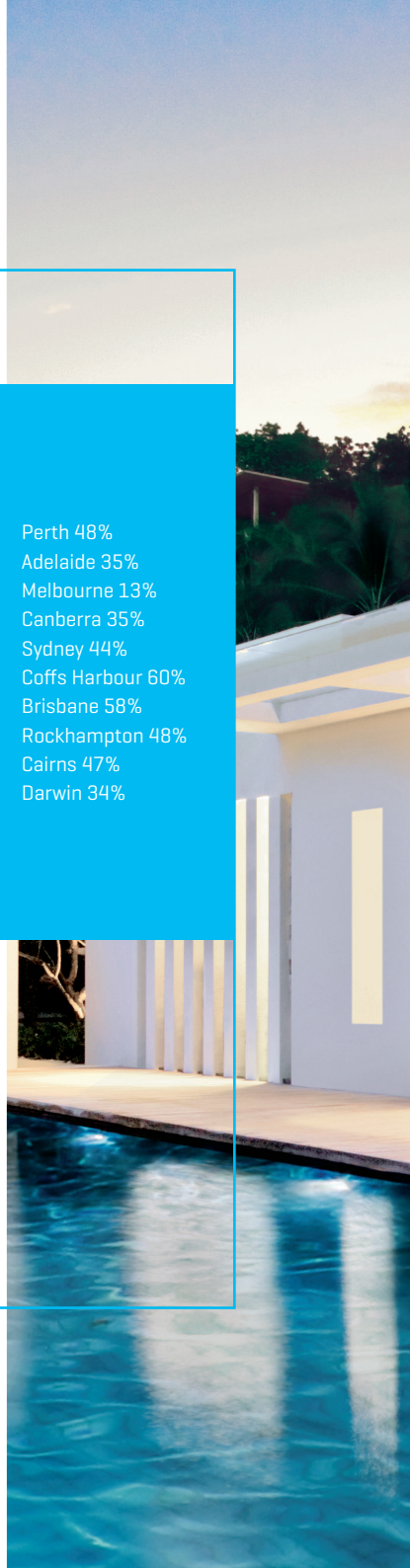
The Turnils Alpha M Awning has been engineered and tested in Australia to specifically handle our diverse and unforgiving conditions all year round. Independent testing by James Cook University's Cyclone Testing Station, in accordance with AS 4040.2, has shown that the Turnils Alpha M Awning (3.5m opening span width) is able to withstand pressures up to 185kph\*\*.

Perth 48%  
Adelaide 35%  
Melbourne 13%  
Canberra 35%  
Sydney 44%  
Coffs Harbour 60%  
Brisbane 58%  
Rockhampton 48%  
Cairns 47%  
Darwin 34%

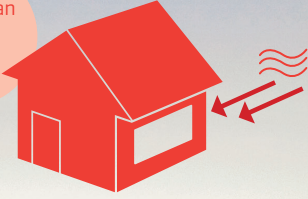
\*\*Results based on a single storey, brick veneer home on a concrete slab using ducted air-conditioning and equally distributed windows with Alpha Awnings installed with Canvas fabric. Based on independent modelling conducted by White Box Technologies in conjunction with Peter Lyons & Associates June 2013.  
Report No. T31166 of James Cook University Cyclone Testing Station, College of Science and Engineering dated 12 March 2020.

Despite the Turnils Alpha M Awning's performance in high wind loads, it is recommended that all awnings be retracted during wet or high wind conditions.

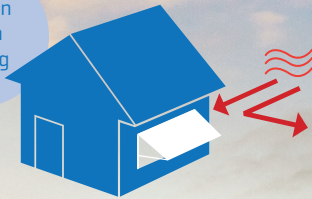
Refer to our manufacturer's guide for full limitations, width, projection and wind rating information.  
Performance is dependent on adequate fixing to a solid structure. Tested in accordance with AS 4040.2 with constant wind pressures held for 1 minute. Before relying on the representations made relating to the Alpha M Awning, please read our disclaimer at [turnils.com.au/AlphaM](http://turnils.com.au/AlphaM)



Without an Alpha Awning



With an Alpha Awning



*Reflects Heat*  
*Keeps Interiors cool*  
*Reduces Energy Costs*

# Alpha Awning Merger Solar Motorisation

**Incorporating the  
best of technology &  
design, control your  
awning with a touch  
of a button.**

Completely solar powered with no hardwiring electricity required for motor operation, eliminating the need for a certified electrician.

Simple & easy to install saving you money & reducing energy costs. Compatible with Neo Smart for home automation.

## 4 Channel Timer Remote

Offers 8  
programmable  
timed events.



## 1, 4 or 8 Channel Remote Control



## NEO Smart Home Automation





Features an LED indicator highlighting if repositioning of the solar panel is required for more sunlight.

## Flexible Mounting Options

The angled bracket facilitates multiple mounting positions such as:

- Front of head-box
- Home fascia or gutter
- Remote mounting

For awnings positioned out of direct sunlight, a 3 metre power extension cable is included.

*5 metre power extension cables are available separately.*

## Battery Heat Protection

Engineered with a heat shield enclosure to protect the in-built battery from extreme exposure to the sun ensuring its durability for years to come.

## Fabric Tensioning Back-Off

Includes an advanced 'fabric tensioning' feature which allows for lock-down bolts or straps to be applied and the awning to be operated without causing damage to the awning.

## Home Automation Connection

Features a dry contact port that supports home automation operation and includes a dry contact cable for simple wiring into an automation system.

## Serviceable Solar Battery

Featuring the latest single cell battery technology, allowing a long lasting solar battery that can be easily self-serviced without the need to remove the motor or dismantle the external awning.

## Adjustable Panel

To capture direct sunlight for maximum solar energy collection and performance, the panel can be easily angled at either 0°, 20° or 40°.



*Features a water tight twist together plug and sealed cable into the receiver module.*

# Alpha Awning Merger<sup>®</sup> Motorisation

## MR50 Awning motor

A 240 volt AC REMOTE CONTROL motor used for single or linked Awnings.

*Operated by a Universal 1, 4 or 8 channel remote control with the option of a Timer Remote Control. Control both internal and external shading products from a single remote control.*

## MS50 Awning motor

A 240 volt AC SWITCH MOTOR used for single or linked awnings.

*The motor is designed to be controlled from a 240V switch or from automation systems with 240 volt blind control modules.*

### 4 Channel Timer Remote

Offers 8 programmable timed events.



### 1, 4 or 8 Channel Remote Control



### NEO Smart Home Automation





Home  
Automation  
Hub

## Weather & Dust Resistant

Fitted with a weather and dust resistant IP68 external in-line connector to ensure a high level of protection against water and foreign particles.

## Fully Tensioned Motor

Features automatic tensioning that permits the awning to be locked into position using hold down straps or locking bolts, with the motor able to be retracted to tension the fabric. This tension minimises fabric “blow outs” traditionally caused by unexpected high winds.

## Wireless Solar Powered Wind & Sun Sensor Option



Operates the awning based on light level, by either raising or lowering the awning depending on the amount of sunlight. The wind sensor retracts an awning in overly windy conditions to avoid any unnecessary strain to the awning.



## Clever & Convenient

- Create up to 25 custom schedules & scenes with easy onetouch app control.
- Operate from your smart phone from any location in the world.
- Partners with **Amazon® Alexa®** & **Control4®** for an integrated home automation solution.
- Wi-Fi enabled.

## Compatible

- Controls all Merger® remote motors including internal roller blinds & external awnings.
- One Neo Smart device supports 8 blinds per room, with a maximum of 30 rooms totalling 240 motors.

## 3 Simple Steps:

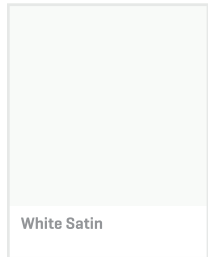
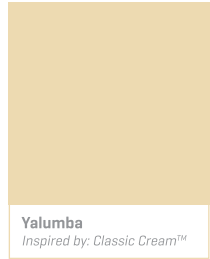
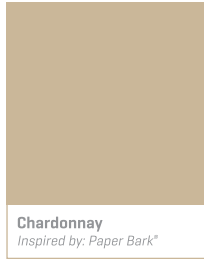
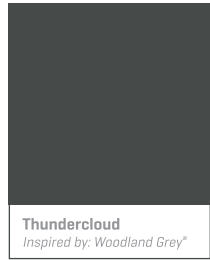
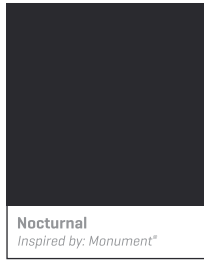
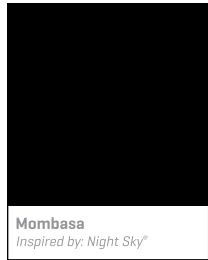
1. Plug in the Neo Smart device.
2. Download app 'Neo Smart Blinds' & create an account.
3. Pair the device then connect & operate the entire Remote Merger® Motor range from any location.

*Full setup details available with device.*

## Part of the Alpha Family

Alpha M has been designed to fit in with the current range of Alpha awnings for a seamlessly coordinated home solution across all design options: Pivot Arm, Straight Drop, Cable Guide and SRS.

Available in 7 colours coordinating with popular Colorbond® and Dulux® colours or mill finish for custom powder-coating.



## Why Wait?

Speak with your Alpha Retailer to help design your Alpha Awning, built in Australia and fully installed by a trained professional.

For more information please contact your Alpha Retailer or visit us online at [turnils.com.au](https://turnils.com.au)



For more information contact us on:  
[hdcustservice@hunterdouglas.com.au](mailto:hdcustservice@hunterdouglas.com.au)

[turnils.com.au](https://turnils.com.au)

© Copyright 2023 Hunter Douglas Limited [ABN 98 009 675 709], 03/2023, 18.322.002

TURNILS is a registered Trade Mark of Hunter Douglas Scandinavia AB.

Merger is a registered trade mark of Hunter Douglas Limited.

COLORBOND® is a registered trade mark of BlueScope Steel Limited.

COLORBOND® colour names are trade marks of BlueScope Steel Limited.

Warranty conditions apply, refer to [www.turnils.com.au](https://www.turnils.com.au) for more details.

Amazon® and Alexa® are registered Trade Marks of Amazon Technologies, Inc.

Apple® and the Apple® logo are trade marks of Apple Inc., registered in the U.S. and other countries.

Control4® and the Control4® logo are registered trademarks of Control4

Dulux® is a registered trade mark of DuluxGroup (Australia) Pty Ltd.

Google® is a registered trade mark of Google LLC.